



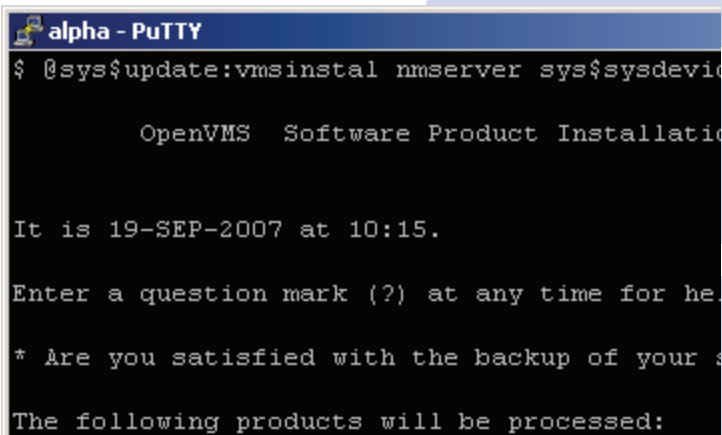
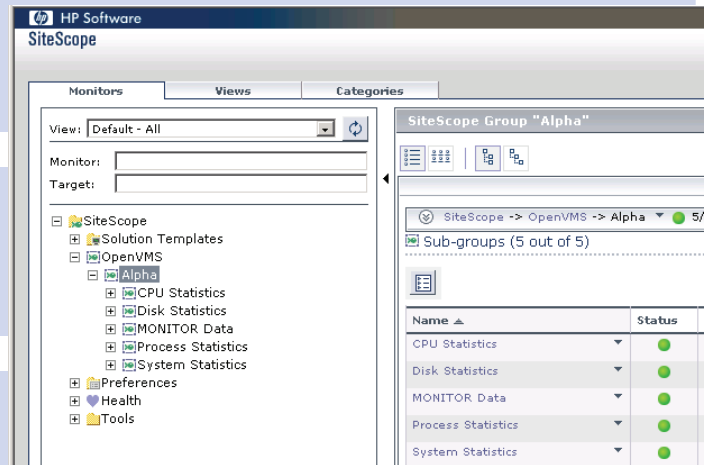
## COMTEK / OpenVMS — SiteScope Integration Data Sheet

### Monitor HP OpenVMS with SiteScope

Your Network and Computers are Mission Critical. Your business depends on its Networks and Servers. Not only are IP networks carrying core business transactions, they are increasingly being used to monitor the performance of remote servers. Without properly functioning servers, you may not be able to conduct business at all. Comtek / OpenVMS allows your SiteScope installation to monitor your HP OpenVMS Alpha, Itanium, and VAX computers anywhere in the world!

### HP SiteScope Monitors Networks and Servers

HP SiteScope is unmatched in monitoring the performance of critical Network and Server Infrastructure. SiteScope provides the information necessary to effectively manage your systems to avoid problems whenever possible. SiteScope reduces cost of ownership by consolidating maintenance and presenting all performance data at a central location.



### Monitor HP OpenVMS with SiteScope

Now you can use SiteScope to Monitor your HP OpenVMS systems. COMTEK NMServer for OpenVMS provides all of the information necessary to understand how your OpenVMS systems are performing. Data such as Disk% full, CPU load, and Memory Usage are available to SiteScope in real time. OpenVMS performance data provides the missing link in many SiteScope installations.

### COMTEK / OpenVMS Includes OpenVMS Systems in SiteScope

COMTEK / OpenVMS is an application that resides on OpenVMS machines. COMTEK /OpenVMS monitors important factors about the machine and OpenVMS, and makes this information available when polled by SiteScope. In addition, COMTEK /OpenVMS sends alerts (called traps) when critical thresholds such as disk nearly full are exceeded.

## COMTEK NMServer/OpenVMS Features

### COMTEK /OpenVMS Monitors:

- Disks, CPU, Interrupts, Processes, Shadow Sets, Excessive COMO, Processes in MWAIT, OpCom

### OpCom and other Queues:

- COMTEK /OpenVMS can Filter and Selectively Forward Opcom messages. The user may specify message filters to eliminate redundant or unimportant Opcom messages.

### Mission Critical Processes:

- COMTEK /OpenVMS sends alerts immediately if a Critical Process is missing or has failed.
- COMTEK /OpenVMS sends Alerts for: Critical Process Missing, CPU Overload, Disk Nearly Full, User Defined Alerts.

```
alpha - PuTTY
# This file contains configuration parameter
# Lines which begin with a pound sign (#) a
# The valid keywords and their default valu
#
# AllPsData=no
# Community=public
# ComQueue=5
# ComoQueue=1
# ControlTermProc=disabled
# CpuPersist=1
# CpuUtil=90
# CritDisksOnly=false
```

### Complete Package

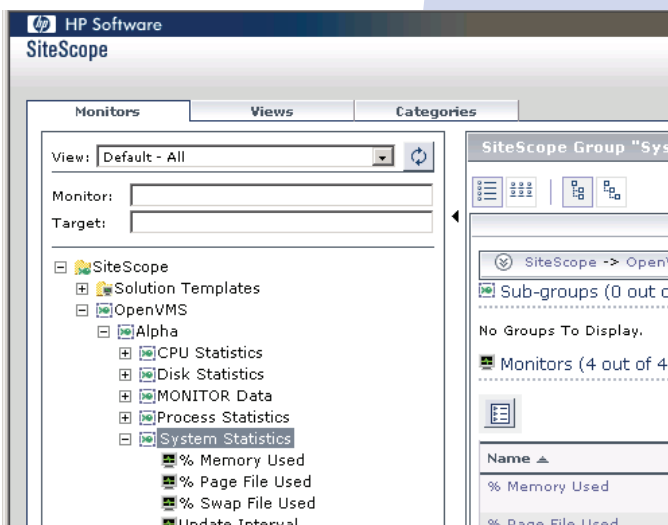
The COMTEK /OpenVMS package includes everything necessary to install and configure COMTEK /OpenVMS including the Installation Guide and MIB, User Guide, Sample Configuration Files, and Readme First document.

### COMTEK /OpenVMS Easy to Install on OpenVMSs

COMTEK /OpenVMS is installed by loading the product and configuring a few parameters such as which features and processes to monitor, and thresholds such as at what percentage disk capacity an alert will be sent.

### SiteScope Easy to Configure to monitor OpenVMS

A complete Installation Guide for installing the COMTEK /OpenVMS MIB in SiteScope is included. This Guide includes step-by-step instructions on how to include the necessary information in SiteScope to allow it to monitor your OpenVMS systems.



© Copyright 2009 COMTEK Services, LLC. The information contained herein is subject to change without notice. Nothing herein should be construed as constituting an additional warranty. COMTEK shall not be liable for technical or editorial errors or omissions.

**COMTEK Services is a software company specializing in Remote Server Monitoring via SNMP.**

COMTEK has been providing SNMP products to the Telecom, Banking, Stock Exchange, Investment, Finance, Food and Pharmaceutical industries since 1998. COMTEK products are monitoring thousands of computers in Africa, Asia, Australia, Europe, and the Americas. COMTEK facilities are located in Texas, New Hampshire, North Carolina, and Virginia. Support is provided worldwide. NMServer, COMTEK, and COMTEK /400 are trademarks of COMTEK Services, LLC. IBM, HP, Mercury, Tivoli, SiteScope, AS/400, Compuware, OpenView, Vantage, IBM, OS/400, Orion, and iSeries may be trademarks of their respective companies.



**COMTEK Services, LLC • Phone: (603) 881-9556**  
**Nashua New Hampshire • Fax: (603) 881-5504**  
<http://www.COMTEKSERVICES.com>